



Contents

Welcome to Exeter	1
Why Exeter?	2
Location, location, location	4
Streatham Campus	6
St Luke's Campus	7
Cornwall Campus	8
Living in the South West	9
Student Life	14
Accommodation	16
Student Services	17
English as a Foreign Language	17
Libraries	18
IT Facilities	18
Your Future	19
How to Apply	20
Tuition fees and living costs	20
Academic year dates	20
Planning your programme	20

"The university of Exeter is a student-friendly institution and has been a wonderful choice for me. It is full of attractions, exciting activities and academic achievements. I'm very proud of studying here, and you'll be proud of it, too."

Se-Young Moon, Hankuk University of Foreign Studies, Seoul, South Korea.

Subject List

Accounting and Finance	22
Arab and Islamic Studies	22
Archaeology	22
Biosciences	22
Business, Management and Leadership	22
Classics and Ancient History	22
Creative Media and IT	22
Computing and IT	22
Drama	22
Economics	23
Engineering	23
English	23
English as a Foreign Language	23
Environment and Sustainability	23
Film Studies	23
Geography	23
Geology	24
History	24
Law	24
Mathematical Sciences	24
Mining Engineering	24
Modern Celtic and Cornish Studies	24
Modern Languages	24
Philosophy	25
Physics	25
Politics and International Relations	25
Psychology	25
Renewable Energy	25
Sociology	25
Sport Sciences	25
Theology	25

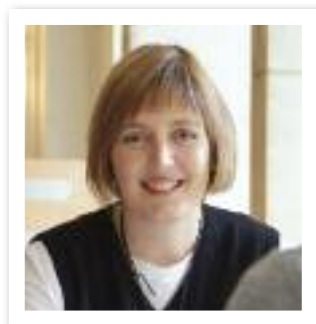


Welcome to Exeter

The University of Exeter offers students the opportunity to choose modules from our entire undergraduate programme (excluding medicine) from over 30 departments including Archaeology, Business, English Literature, Politics, Psychology and Sport Sciences. Modules are taught by academics who are passionate about their subject and whose research interests have an international reputation.

In the last academic year we've welcomed study abroad students from The College of William and Mary, Kenyon College, University of Denver, University of Toronto, McGill University, University of Sydney, University of Auckland and students from universities in Brunei, Japan, Hong Kong, South Korea, Russia, China, Mexico and Norway.

The Streatham Campus is considered to be one of the most beautiful in England with student housing and teaching buildings grouped closely together. The historic city of Exeter is only a 15-minute walk from



Anne Worth
Study Abroad Officer



Isabela Coelho-Knapp
Study Abroad
Administrator

campus where you can discover the charm of the Cathedral Close, the vibrant shopping centre in the Princesshay development and the Quayside. Exeter is located only 20 minutes from the nearest beach, with Dartmoor National Park close by, surfing beaches on the North Devon and North Cornwall coast and London just 2 1/2 hours away. Exeter International Airport has daily flights to Paris, Amsterdam, Scotland, Ireland and many other European destinations.

If you are interested in studying abroad for a semester or full academic year you will want to consider Exeter's programme, which not only offers a high quality education, but a safe, supportive and friendly environment with excellent student-run entertainment, student societies and sports clubs.

We are very happy to provide further information or advice about Exeter and would like to encourage you to read our Study Abroad Brochure to see if Exeter is the right place for you.

We look forward to welcoming you to Exeter.

If you have any questions about our programme please send us an email and we will be happy to help you: studyabroad@exeter.ac.uk

Why Exeter?

A great reputation

- The University won the prestigious *Times Higher Education* University of the Year award in November 2007.
- We are ranked 13th in *The Times* and 14th in *The Guardian* and *The Sunday Times* 2008 league tables, scoring particularly highly for student satisfaction.
- Exeter has one of the highest National Student Survey rankings in the country and has maintained its top 10 position for four years running. In 2008, the University came 4th in the UK amongst 'full service' universities, just behind Loughborough and Cambridge.*
- A research-led university – nearly 90% of Exeter's research was rated as being at internationally recognised levels in the latest (2008) Research Assessment Exercise. Sixteen of our 31 subjects are ranked in the top 10,

with 27 in the top 20.** Every subject was assessed as including world-leading (4*) research.

- At the University of Exeter you study and learn with the experts – with those who write the books and create the knowledge. This means that your learning and teaching will be up-to-date and you will benefit from access to the latest thinking, equipment and resources.

* based on the average of positive responses across all survey categories. Full service universities excludes specialist colleges.

** based on percentage of research categorised as 3* and/or 4* (internationally excellent or world leading).

An experience for life

- The University of Exeter is about more than getting an education – there's a wealth of opportunities open to you to develop personally as well as professionally.



Exceptional locations

- Sandy beaches, moorland and some of the most stunning countryside in Britain are right on the University's doorstep. The South West is one of Europe's most popular holiday destinations – as a student you'll be able to enjoy it all year round.
- The Streatham Campus in Exeter is widely acknowledged to be the most beautiful in the UK – many students say they simply fell in love with it when they first came to visit.



"After attending a large university in a big metropolitan city for a year and a half, I was looking for a change of pace for my year abroad. In addition to its campus base and great community atmosphere, Exeter was an ideal choice because the city's location makes it a good base for travelling around England and around Europe.

My professors have been very friendly and open to meet with me whenever I need assistance with my modules.

My classes have been very small, and tutorials make it easier to get to know both the professor and fellow students. The approach to teaching taken here is very positive; students are given the opportunity to offer insight on class material.

The best thing about Exeter is that you get to know people really easily – even after one month here, it's hard to walk from my residence to the library without bumping into someone I recognise. The other great thing is the ease of travel because of Exeter's train and bus stations, which make it possible to take weekend trips to just about anywhere. By the time I leave, I will have spent 6 weeks backpacking across Europe over Easter vacation, which is a new experience for me."

ANNIE BENDER, UNIVERSITY OF TORONTO, CANADA, STUDYING ENGLISH AND ANTHROPOLOGY



“I’ve enjoyed the whole experience of being away from America. The culture, the architecture, the city, the people, have added up to an unforgettable experience.”

ALICIA BARTOMELI, WESTERN CONNECTICUT STATE UNIVERSITY, USA



- Our campus near Falmouth in Cornwall offers a fantastic student lifestyle with excellent facilities and plenty of opportunities for sporting and other outdoor activities. With around 3,000 students studying in the local area, Falmouth is a lively student town with a wealth of bars and restaurants, and with its stunning coastal location come beautiful beaches and superb water sports.

A university with history

- The roots of the University can be traced back to the School of Art, which was founded in 1855. The University as we now know it was bestowed the Royal Charter by Queen Elizabeth II in 1955.

A great atmosphere

- With around 15,500 students, the University of Exeter offers a safe, friendly and welcoming campus environment where there’s always lots going on but is also small enough so you’re not just a face in the crowd.

- The University attracts students who love getting involved, whether it’s in running clubs, volunteering, fundraising, sports or the arts and music.

We put students first

- In the 2008 National Student Survey, Exeter scored in the top 10 in every category, including 4th for teaching, 5th for academic support, personal development and organisation and management and 6th for assessment and feedback.
- We’ve invested over £140 million in new buildings and facilities in the last five years, ranging from new research centres and teaching facilities to the Students’ Guild building and nightclub.

- The University is now looking to the future with a planned £450 million investment in campus facilities. This includes a £150 million investment in new on-campus student residences, a £48 million redevelopment of the centre of the

Streatham Campus called the Forum Project, a £25 million investment in the Business School and £18 million for new facilities for Biosciences.

- The £100 million Cornwall Campus offers the very latest in academic, research and residential facilities, designed to meet the expectations of students in the 21st century.
- The library is in the midst of a £9 million investment programme and Exeter’s expenditure on library books, journals and electronic resources is 35% above the national average in terms of spend per full- time student (LISU/SCONUL figures, 2006/7).



“Students at Exeter are likely to have permanent smiles on their faces: it has campuses in the cathedral city and also near Falmouth in Cornwall, as well as plenty of coastline, countryside and glorious weather.”

THE GUARDIAN

E Exeter campuses

C Cornwall Campus



“The beautiful surroundings of the three Exeter campuses [are] set close to coastal and moorland scenery to rival anything in Britain.”

The Sunday Times, September 2008





Bristol

Bristol
1hr by train from Exeter

London
2.5hrs by train from Exeter

E
Exeter

Falmouth
2.5hrs by train from Exeter

Cornwall Campus, near Falmouth

A unique £100 million campus, that brings the heart of the University of Exeter to an environment unrivalled in the UK. With the very latest in teaching facilities, a friendly atmosphere and innovative programmes, our Cornwall Campus offers a great student experience.

Streatham Campus, Exeter

Our main campus in Exeter offers a stunning environment with exceptional facilities and atmosphere. The campus is one of the most beautiful in the country with lakes, parkland, woodland, and gardens to enjoy throughout the year. As the hub for the Students' Guild and sporting facilities, the Streatham Campus offers something for everyone.

St Luke's Campus, Exeter

Our historic St Luke's Campus has been home to excellent teaching since 1855. It's home to the School of Sport and Health Sciences and provides a vibrant, collegiate atmosphere.





"I've gained so much from my experiences at Exeter. I've stretched myself academically and emotionally, while gaining new friends and new experiences that I will remember for a lifetime."

STEPHANIE POTTS, WASHINGTON UNIVERSITY, ST LOUIS, USA

Streatham Campus

“Exeter is very easy to fall in love with. It has one of the most beautiful campuses in the country, in one of the most beautiful counties in Britain.”

VIRGIN ALTERNATIVE GUIDE TO BRITISH UNIVERSITIES, 2008

The University has around 15,500 students, of which 11,000 are undergraduates. This means it's large enough to offer all the facilities you would expect to find in a major university, but small enough to retain a friendly and welcoming atmosphere.

The majority of students are based at the Streatham Campus, which is the largest site in Exeter. The beautiful campus offers a unique environment in which to study and all the teaching buildings together with the Sports Park, the library, the shopping centre, restaurants, cafés and bars are within walking distance of each other.

The city centre is only a 15-minute walk away and so you can enjoy the advantages of a campus-based university without missing out on life in the city.

Most of our purpose-built self-catering flats are either on campus or nearby in the city centre, so you'll have easy access to everything you'll need without having to do lots of travelling around the city.



St Luke's Campus

You will study at St Luke's Campus if you are taking modules in the School of Sport and Health Sciences.

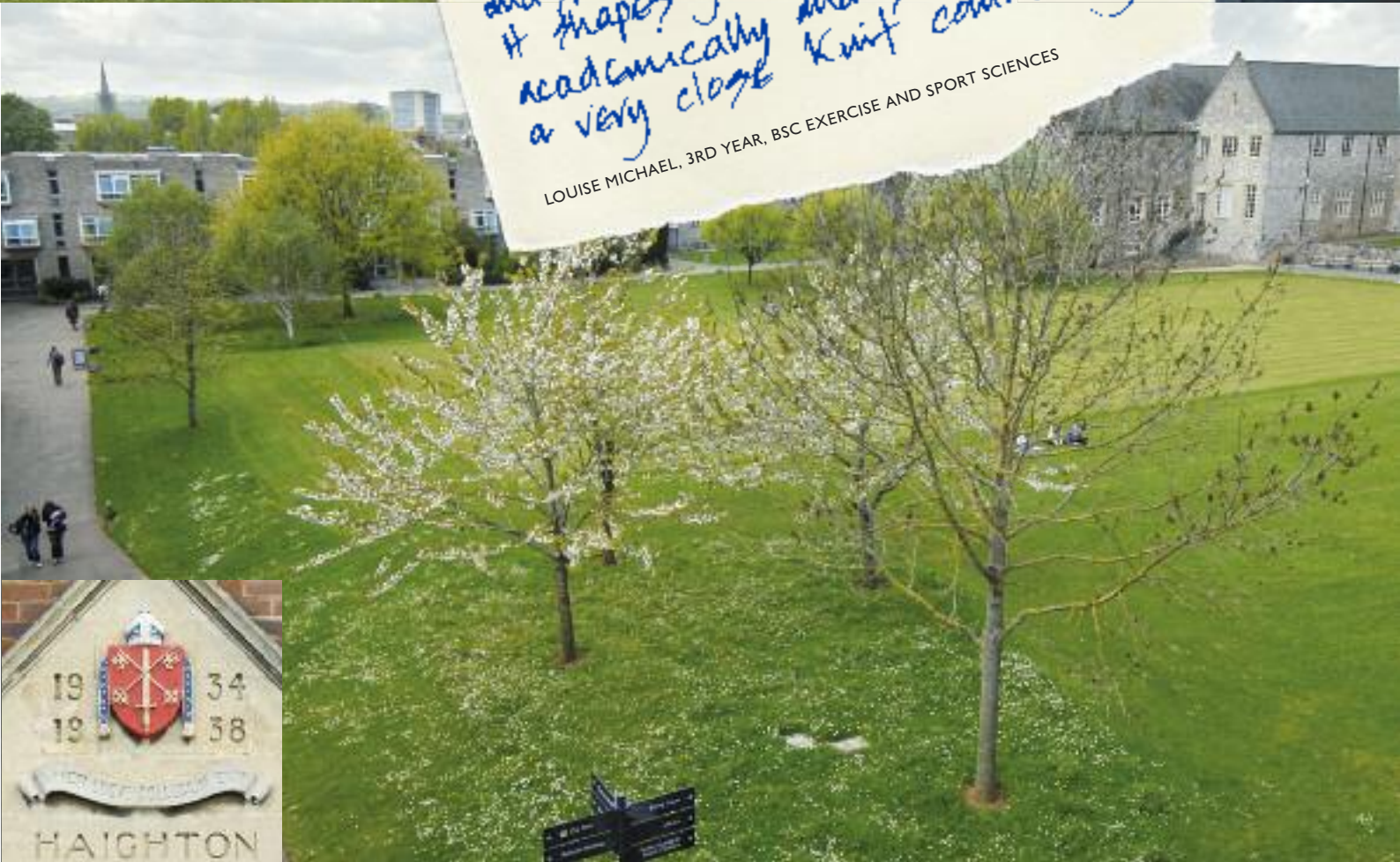
Students have studied at St Luke's for over 150 years and although much has changed over the years, the campus has retained a vibrant, collegiate atmosphere in which everyone soon gets to know each other. Walk through the arches of the traditional North Cloisters and you will see the lawns of the quadrangle surrounded by modern teaching buildings and student residences.

Academic facilities include a library, a bookshop, IT facilities and support, modern seminar rooms and lecture theatres. The St Luke's Campus has excellent facilities for sport including a sports hall, a gymnasium, an air-conditioned health and fitness studio and an indoor heated swimming pool. The Students' Guild organises many events and activities on campus but students at St Luke's also take full advantage of all the academic, social and sporting facilities at the Streatham Campus which is about a 25-minute walk or short bus ride away.



The St Luke's Campus is so individual and special in character and history. It shapes your education both academically and socially - it's a very close knit community.

LOUISE MICHAEL, 3RD YEAR, BSC EXERCISE AND SPORT SCIENCES



Cornwall Campus

At our innovative Cornwall Campus near Falmouth we offer a wide range of modules in the humanities, sciences, social sciences and engineering. With a population of around 2,000 students, the campus offers a welcoming atmosphere where it's easy to make new friends and where staff and students know each other well.

The campus's stunning main buildings have been equipped to deliver the very best in learning and teaching facilities, with teaching laboratories, lecture theatres and seminar rooms equipped

with the latest technologies. Social facilities on campus include a fully-equipped gym and fitness studio, restaurant and student bar, as well as a 1,000-capacity venue which regularly hosts live bands and DJs, as well as comedy, open mic sessions and club nights.

Our Cornwall Campus has its own Students' Union, which is closely linked to the Exeter Students' Guild. There is a wide variety of Students' Union clubs and societies including competitive sports, departmental and social

societies – from surfing and scuba diving to theatre and filmmaking.

Accommodation is available on campus, in a purpose-built student village called Glasney Parc. The recently built complex has en-suite rooms finished to a very high standard, each with their own telephone and internet connection.

“I decided to study at Exeter because the modules offered in Exeter fit nicely with what I've studied in my home university. The lecturers constantly inspire students to discover new things as Physics is not taught as unchangeable facts. I have read about this before and now I've been able to experience it. Fortunately, every lecturer either for Maths or Physics is very approachable and easy to get in touch with. The standard of education is high and each module is a challenge.

Exeter is small and peaceful, making it easy to adapt to and there's no discrimination against culture and religious difference, making me feel more secure. I made several friends from various countries and I've gained beautiful memories as I've been able to experience celebrating various events in Exeter and travelling with my friends. I've also gained an appreciation towards my family, culture and religion. Being away from home makes me realise how important they are to me.”

DK. NOR'AIN PG. HAJI HASHIM, UNIVERSITY BRUNEI DARUSSALAM, STUDYING MATHEMATICS AND PHYSICS



Living in the South West



Living in Exeter

Exeter has a population of 122,000 and there is something for everyone, whether your tastes are for exploring the city or enjoying the countryside. Let's start with the city; probably the best known building is the Cathedral which was consecrated in 1133 and rebuilt in the late medieval period. It is set in a beautiful close with interesting historic buildings and good shops and restaurants. You will also want to see the Guildhall in the High Street which is the oldest civic working building in the country, or Mol's Coffee House and the Ship Inn which were favourite haunts of Sir

Francis Drake and Sir Walter Raleigh. All of these mix easily with the £235 million shopping complex which has redeveloped the city centre.

Just off the High Street you will find Gandy Street, which has many interesting shops ranging from designer labels to jewellery, crystals and gifts. You will also find Exeter's arts centre, the Phoenix, which offers top quality theatre, dynamic dance, live music from around the world, exhibitions of visual arts and crafts and thought-provoking films. There are plenty of clubs in Exeter with student nights throughout the week. Performers from the London stand-up comedy circuit regularly visit

the Corn Exchange. Live music can be enjoyed throughout the city in pubs, clubs and concert halls.

As well as the Northcott Theatre on the Streatham Campus, Exeter also has two smaller theatres, the Barnfield Theatre and the Phoenix Theatre, whilst Plymouth's Theatre Royal attracts national touring companies such as the Royal Shakespeare Company. The Vue Cinema is the main cinema in Exeter with seven screens but the smaller Picturehouse Cinema is also very popular with regular seasons of foreign and classic films and a bar with fabulous views where you can have a drink or relax with a coffee and newspaper.



"With a touch of buzzy, big city atmosphere, a large student population and a thriving arts scene, Exeter is one of the liveliest cities in the South West... The excellent selection of funky bars, cafés and restaurants make Exeter a vibrant place to be after dark."

LONELY PLANET GUIDE TO GREAT BRITAIN





“I chose to study at the University of Exeter because of the affiliation with my university back in the States. They have been sending groups of students here for over 30 years because of Exeter’s high quality of teaching and academic reputation. I always knew that if I was going to continue studying literature I would want to do it in the UK. I’ve particularly benefited from the expertise of the English faculty and the wide array of course options.

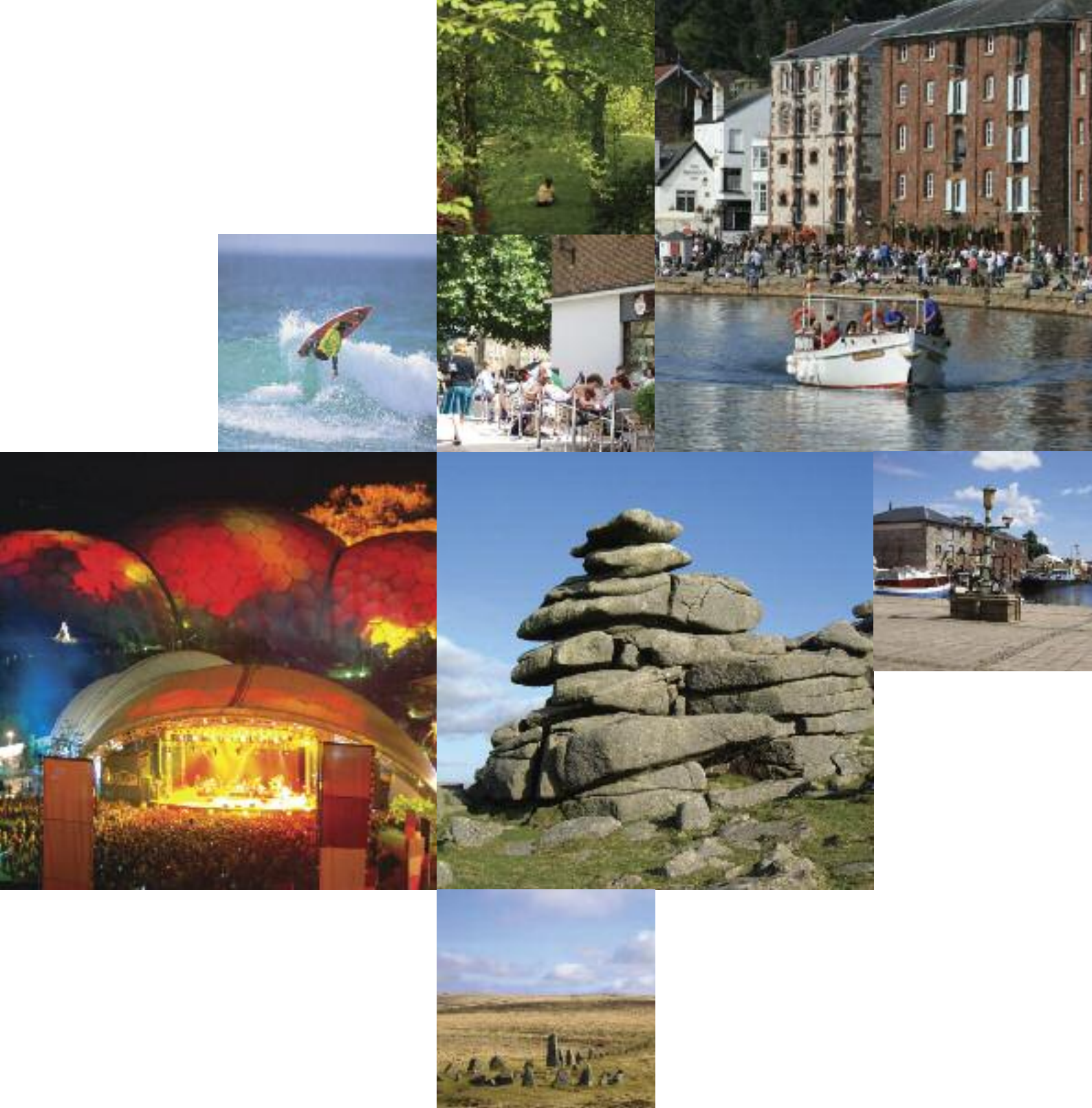
By far my most positive academic experiences here have taken place in the seminar settings. I have found the professors to be incredibly knowledgeable and skilled at fostering class debates. At such a large university it’s been particularly nice feeling like the teachers care about my academic experience on an individual level, which is strengthened by the intimate class dynamics and the availability and encouragement of office hours.

Besides being able to easily journey to the rest of Europe, being in England’s South West has provided some excellent travel experiences around England itself: whether just brief jaunts down Exmouth’s gorgeous beaches, theatre excursions to Bath and Stratford, weekends in London, or hiking trips along Cornwall’s rocky coastline.

Being abroad for the year has been an amazing experience. Being in Exeter and having the opportunity to travel around England and Europe has been a particular pleasure and learning experience. Becoming friends and living with other Exeter students has really been a great way for me to get to experience English culture. It’s been great becoming close with such an utterly energetic and sociable group of people. Going back to the States next year, I’ll definitely have benefited from the experiences which Exeter has offered me.”

STEVEN BERTOZZI, KENYON COLLEGE, USA, STUDYING ENGLISH





“ Exeter celebrates history and embraces today... its thriving nightlife, lively cultural scene and rich history make it well worth a visit. This old city is young at heart thanks to a large student crowd and plenty of bars, clubs and cafés, especially around the revitalised quay area. ”

LONELY PLANET GUIDE TO GREAT BRITAIN

Living in Cornwall

Cornwall has a huge amount to offer students. It will appeal to you if you want to study in beautiful surroundings and live as part of a vibrant student community where you constantly meet people you know. Here, you'll find a fantastic student lifestyle in a safe, friendly and energising environment, with plenty of opportunities for sporting and outdoor activities.

Our Cornwall Campus is just a short distance from the lively, waterfront town of Falmouth. With its seven beaches, beautiful rivers and the world-famous marina, it's a haven for those who love sand, sea and surf.

With around 3,000 students studying in the local area, Falmouth has developed into an exciting student town, with a wealth of bars, pubs and restaurants and a lively café culture to explore. Falmouth is at the centre of Cornwall's creative scene, with new businesses, studios, shops and galleries opening up all the time. Falmouth also has a popular arts centre, The Poly, which hosts a diverse programme of exhibitions, film, theatre and there's a great live music scene across the town.

Students at the Cornwall Campus also find it easy to enjoy nights out in other parts of Cornwall such as Newquay and Truro, often organised by the Students' Union and its clubs and societies.

It's an exciting time to be living in Cornwall. With a rapidly growing economy fuelled by investment from business and Government, the county is enjoying its renaissance. Cornwall is leading the way in technologies such as renewable energy, and developments such as the Eden Project have attracted worldwide acclaim.



"I can't think of anywhere else in the UK I would rather live. The laid back outdoor lifestyle suits me down to the ground. The Cornish landscape is fantastic and having the sand, sea and surf on your doorstep makes it a great place to work and play."

TONY BICKNELL, CORNWALL CAMPUS



Beaches and countryside

The lifestyle of the South West is perfect for relaxing; you can head for the beach, go to a country pub or take in the fresh air and sunshine in beauty spots on the moors. And it's also a paradise for the outdoor enthusiast looking for a bit more of an adrenaline rush. The wild scenery of Dartmoor, Exmoor or Bodmin Moor and the amazing coastal footpaths provide an exciting challenge for hikers, climbers, horse riders, cyclists and other sports people; while the coast and rivers are perfect for sailors, swimmers, water-skiers, windsurfers, kite-surfers and sunbathers! Surfers can find some of the best surf in the country on the north Devon and Cornwall coasts and international surfing competitions are often held in Cornwall. In contrast, the gentler landscapes of rolling hills, rivers and attractive market towns and villages throughout the South West are perfect for exploring in a leisurely fashion.

The South West is one of Europe's top holiday destinations – as a student here you'll be able to enjoy all the region has to offer all year round.



Travel opportunities

Road and rail links with the rest of the UK are good. In Exeter, the main St David's train station is only 15 minutes' walk away from the Streatham Campus and has regular services to London and all major cities in the UK. London is around two and a half hours away by train and around three and a half hours by road. The nearest main-line station for the Cornwall Campus is Truro which is just over four hours from London by train. The Cornwall Campus is about 100 miles to the west of Exeter and takes around two hours by car. The nearest train station (Penryn) is just 15 minutes' walk from the campus.

Exeter has its own regional airport with an increasing number of scheduled flights to the UK and Europe, which means that there are many opportunities for you to explore further afield during weekends and vacations. There are daily flights to Edinburgh, Aberdeen and Glasgow in Scotland, Belfast in Northern Ireland, Dublin in Ireland, Paris, Amsterdam and many other European destinations, and a weekly flight to Toronto in Canada. There are also regional airports in Plymouth and Bristol which fly to a long list of destinations.



Student Life

The key to getting the best out of your time here, both educationally and culturally, is to get fully involved in student life.

You can join a student music or drama group, continue with your favourite sport or take up a new one; join one of the 50 sports clubs or the 100 societies covering every conceivable interest; get involved with local volunteering projects through Community Action; or just enjoy being in a new place and making new friends.

Welcome Week

We invite all new students – from the UK and overseas – to attend Welcome Week which is held immediately before the start of the first semester. It is a great introduction to life at Exeter. In 2010 it will run from Sunday 26 September to Sunday 3 October. A similar programme is run over a two-week period at the Cornwall Campus.

For students based in Exeter, there is a special 'International Welcome Week' that is part of the University Welcome Week programme for all new students. In previous years this has included an international students' lounge with free internet café and special sessions for international students, which will help you settle in by providing practical information about the University and life in England. You will be able to visit the city and learn something of its history, meet representatives of campus organisations and, on Schools' Day, meet staff and fellow students of the School in which you will be studying. You might even take the opportunity to try a new activity; perhaps canoeing along the river Exe?

Although attendance at Welcome Week is optional, most students say 'Don't miss it!' It's your chance to thoroughly enjoy yourself and settle into your new home before the semester starts and you have to start studying.

If you are offered a place to study here you will be sent full details about Welcome Week and all the other information you need about travel arrangements and arrival at the University well in advance.

An orientation programme is run in January for Study Abroad students who are coming to Exeter for semester 2.

The Students' Guild



At our campuses in Exeter, the Students' Guild (the Students' Union) is central to student life. It's run on a day-to-day basis by six elected Guild Officers – students who take a paid year out from their studies and act as the 'voice' of the student body. On the social side the Students' Guild organises entertainment such as bands, discos and the Summer Ball as well as financing the student societies and sports clubs. The Students' Guild has also recently invested £2 million in their facilities on campus in Exeter, providing you with great places to eat, enjoy a drink and relax on campus.



At our Cornwall Campus, the Students' Union is known as FXU and is run jointly between the University of Exeter and University College Falmouth, with whom we share the campus. As with the Guild in Exeter, starting with Freshers' Fortnight, FXU will play a major role in your experience as a student. They organise events on and off campus, and help students to set up and run clubs and societies.



Whether you are studying in Exeter or Cornwall, you can get involved in volunteering projects in the local area through Community Action and in the extremely successful RAG charities appeal. Student welfare is an important part of the Students' Guild activities. Professional staff at the Student Advice Unit will be able to help with any problems you may encounter.

For more about the Students' Guild see www.exeterguild.org



Sport

2008 was another successful year for sport at Exeter with many teams and individuals achieving excellent results. Our teams competed for national titles in numerous competitions including cricket, golf, hockey, judo, netball, rowing, rugby union, sailing, squash, surfing and tennis. You will, however, be welcomed by our clubs whether you are a complete beginner or an expert.

An £8 million investment programme in our facilities in Exeter has resulted in a brand new sports ground (for rugby, soccer and cricket), tennis centre with indoor and outdoor courts and other excellent facilities including a health and fitness studio and two exercise studios. We also opened a £2 million indoor cricket centre in 2009. There are popular programmes in aerobics and circuit training, along with courses in pilates, yoga, dance, badminton, squash and tennis. At the Cornwall Campus, new facilities of a very high standard are also available.

Our location in Exeter, close to the Exe estuary, is excellent for all water sports and the University has two swimming pools. The indoor pool at the St Luke's Campus is open all year round and the outdoor swimming pool on the Streatham Campus is very popular during the summer months. More details can be found at www.exeter.ac.uk/sport



“I was influenced to come and study at the University of Exeter by its league table position and the top standards for finance and economics. My lecturers have been really great and the material covered is very interesting. Exeter is a prestigious university and I’m able to take away fond memories and a degree that is really worth something.

Living on campus is a great way to meet loads of friends and have a lot of fun. The uni also makes sure you are doing well and is able to support your needs in any way they can.

My experience has made me appreciate my friends and family and has given me more confidence and knowledge. I’d absolutely recommend the University of Exeter without a doubt.”

JOHN SANDERS, MASSEY UNIVERSITY, NEW ZEALAND,
STUDYING FINANCE AND ECONOMICS



Accommodation

“Where will I live?” is for most students an important factor in choosing where to study, and rightly so because it can make a big difference to your study abroad experience.



Most Study Abroad students choose to live in the University's purpose-built self-catering flats (apartments). We are also able to provide a list of privately-owned flats and houses for rent.

Accommodation in Exeter

We have nearly 2,000 places in purpose-built flats and houses. All rooms are single occupancy and we offer a choice of standard rooms, most of which have a washbasin in the room; enhanced rooms, which have newer fixtures and fittings; and en-suite rooms which have a private shower, washbasin and toilet. All study bedrooms are furnished with beds, wardrobes and desks and have a phone and broadband connection. The kitchens are modern and well-equipped and have dining areas. Some accommodation has communal lounges and laundry facilities. We have a number of en-suite rooms which are suitable for students with a range of disabilities. Please discuss your personal needs with the Accommodation Office who will be happy to make the necessary arrangements.

Typical costs

In 2009/10 the cost of self-catering accommodation in Exeter was between £69.86 and £106.05 per week depending on the type of room. Our contracts are normally for 40 weeks, and cover Welcome Week and the Christmas and Easter vacations. Rents and letting periods are reviewed annually and details are available on our website.

Private sector accommodation

The Accommodation Office maintains a database of rooms available in the private sector. Most of the properties are houses with four to six bedrooms, situated in the city, normally within walking distance or just a short bus ride from the campuses. Each resident will normally have their own bedroom and share a kitchen and bathroom with their housemates. Rents are typically £70 to £90 per week plus utility bills, and you should expect to have a contract for 42-44 weeks and to pay a deposit of £150 to £250 per resident.

Accommodation in Cornwall

At our Cornwall Campus, we offer exceptional accommodation, just a couple of minutes' walk from all the academic and social facilities. Glasney Parc is a purpose-built student village offering high quality, en-suite accommodation on campus. The buildings are divided into self-catered flats shared with six other students. The rooms are furnished to a high standard with double bed, wardrobe, desk, telephone and internet points. A number of rooms have been modified for students with a range of disabilities.

Typical costs

In 2009/10, the rent was £105.42 per week. This includes all utility bills and contents insurance cover for the room. Currently all our contracts cover both

the Christmas and Easter breaks. Rents are reviewed annually and details are available on our website.

Private sector accommodation

There is a good range of private housing available for rent in and around Falmouth and Penryn, with rents typically in the region of £65-£80 per week. The Cornwall Campus Accommodation Office offers a range of services to help students find private sector accommodation. These include an online list of private sector accommodation, house hunting sessions and accommodation fairs.

More information

Further information is available from the Accommodation Offices in both Exeter and Cornwall. The staff are always happy to help with any queries or problems relating to accommodation. They can be contacted as follows:

Exeter:

Telephone: +44 (0) 1392 262524
Email: accommodation@exeter.ac.uk
Website: www.exeter.ac.uk/accommodation

Cornwall:

Tel: +44 (0)1326 370436
Email: accommodation@tremoughservices.com
Website: www.exeter.ac.uk/cornwall/accommodation



Student Services

Student Support

We want you to remember your time here as rewarding, exciting and fun and don't expect you to have any serious problems. However, some students may feel unsettled in adapting to their new home, new friends and new ways of learning, so we have a network of experienced people on hand to help.

There is a Study Abroad Coordinator, who is a member of staff in your School, with whom you can discuss any problems relating to your academic progress and who can provide appropriate advice relating to specific programmes of study and modules.

Further specialist staff are available for advice including the Student Advice Unit, the Student Counselling Service, the Student Skills Service, the Disability Resource Centre, the Accommodation Office, the International Office, the Residence Support Team and the Multi-faith Chaplaincy. Full information is available at www.exeter.ac.uk/studenthelp

The University warmly welcomes and supports students with disabilities. You are asked to disclose any disability (including learning disabilities such as dyslexia or a physical disability) on

your application form. This will not affect your application but will enable us to plan and prepare for your arrival and support.

We recognise that all students may require extra support to help them succeed in their academic studies. Whether you are experiencing problems with study skills or feel that your work could be improved through the development of new study techniques, the Student Skills Service can advise you on assignment planning and writing, reading strategies, revision and exam techniques and presentation skills.

www.exeter.ac.uk/eeu/studentskills

English as a foreign language

If English is not your first language there are many options for you drawing on the expertise of the INTO University of Exeter Centre which runs courses all year round in general and academic English.

In order to study subjects other than English language, you will normally be required to meet the standard University entry requirement of 6.5 in IELTS, 570 in TOEFL PBT or 88 in TOEFL IBT. If your current level of English does not meet these minimum standards it is possible to

spend your first semester studying English at the INTO Centre in order to improve your skills before transferring to the Study Abroad programme in the second semester. The length of time needed to study English in order to reach our entry requirements will depend on your linguistic ability on enrolment. If this is your preference, please indicate it on your application form.

The INTO Centre also offers non-credit bearing in-session support courses including writing tutorials, grammar workshops and oral communication classes. These are open to students who meet our entry requirements but wish to continue to improve their linguistic skills without losing a focus on their academic programme content.

Alternatively it is possible to study only English language here by taking all of your credits at the INTO Centre. If this is your preference please apply directly to the INTO Centre.

For further details of the INTO University of Exeter Centre's programmes please visit www.into.uk.com/exeter

Libraries

At Exeter we pride ourselves on our library facilities. In fact our library expenditure is some 35 per cent higher than the national average in terms of spend per full-time student (LISU/SCONUL 2006/07). Users benefit from 24/7 access, self-service machines, state-of-the-art multimedia facilities, enhanced group and silent study areas, an extended wifi network and an increase of key texts and electronic resources.

Students based in Exeter have access to five library facilities:

Main Library – undergraduate and research collections for most subjects, multimedia facilities, group study facilities.

Old Library – special collections including the Bill Douglas Centre for the History of Cinema and Popular Culture.

Law Library – including the European Documentation Centre.

Arab World Documentation Unit – materials on the Gulf region and other Arab countries.

St Luke's Campus Library – Sport and Health Science collections.

At our Cornwall Campus, the library and IT facilities are housed in the Learning Resources Centre (LRC). Built in 2004, the LRC has been designed to provide a modern and comfortable study environment. Library users currently benefit from self-service facilities, a range of different study areas including group and silent study areas, and wifi throughout the LRC. The majority of texts have been acquired or purchased since 2004 and the collections are continually being reviewed and updated. Special collections include the Camborne School of Mines archives and the Institute of Cornish Studies collection. The Law Collection also meets the Law Society's accreditation standards.

Other libraries

In Exeter, the University also helps operate the Devon and Exeter Institution Library which is a private collection particularly strong in West Country materials and nineteenth-century periodicals. The independent Cathedral Library contains the Anglo-Saxon Exeter Book and the Exeter Domesday Book together with many other rare manuscripts and printed books from the medieval and early modern periods, and University members may have access by arrangement.

IT services

All students have access to MyExeter – a student portal which is home to vital IT services that you'll need throughout your time at Exeter. You can access MyExeter from any web-enabled computer in the world.

Nearly all University owned residences are connected to our network, giving you access to all University resources and cheap, fast broadband access.

It's not a problem if you don't have your own computer – there are public-access PC 'clusters' at all campuses – many open 24 hours. You can even borrow a laptop for use in the Main, Old and Law libraries on the Streatham Campus and the St Luke's Campus Library.

We have a dedicated IT Help Desk that can help you with any queries – from support for the specific services offered by the University, to virus problems and internet access. We even run specific laptop clinics to help you get your own laptop working with our system. Throughout the year, we also run short training courses for all key software.

“Archaeology is an incredibly diverse subject that encompasses the entirety of past human endeavour and employs techniques that span the arts and sciences. My own research area is zooarchaeology, which examines our past relationship with animals from studying bone remains. My recent research has been on early domestication of horses. I integrate my research into my teaching and I have taken students to conduct field research in locations as disparate as Kazakhstan in Central Asia and South Dakota, USA. Our Department has a very international feel, with staff coming from, or researching, many different regions of the world.”

DR ALAN K. OUTRAM, HEAD OF ARCHAEOLOGY





Your Future

Taking part in the Study Abroad scheme at Exeter will provide you with excellent opportunities for both personal and professional development. We are committed to providing all our students with the opportunities to develop essential skills and to help you make the most of your potential, so that your study abroad experience has a lasting impact on your future life and career.

As mentioned elsewhere in this guide, there are many services available at the University which specialise in helping you to develop, ranging from study skills services and English language support to personal tutors. There are also opportunities to get involved with voluntary work with the Students' Guild and to explore new interests through the many societies.

In addition to this, our Careers and Employment Service can provide specific careers advice and training. For further details, please see www.exeter.ac.uk/employability

Working whilst studying

The Works, based on the Streatham Campus, is run jointly by the Careers and Employment Service and the Students' Guild, for students to develop their skills and access information on graduate jobs, term-time work, training opportunities and volunteering. The Careers Advisory Service (CAS) in Cornwall also offers a similar service. International students with a Student Visa (Entry Clearance) are able to get a job and work for up to 20 hours per week during term-time and full-time in the vacation. Industry in the South West of England is primarily service based so it is relatively easy to find part-time work to supplement your income.

The Works also acts as a gateway to other services offered by the University's Careers and Employment Service.



How to Apply

Completing your application form

The International Office operates a 'fast track' admissions system for study abroad applicants, and aims to process applications within 10 working days. However, it may occasionally take a little longer if you are applying for modules in more than one School.

Once a decision has been made the International Office will send an official letter informing you of the result of your application. If we are able to offer you a place at Exeter we will also send you an information pack containing details of accommodation, travel information and information for your arrival in the UK.

Applications for October entry should reach us before **31 May**; applications for January entry should reach us before **31 October**. Any applications received after these dates may be considered at the University's discretion.

Tuition fees and living costs

The tuition fees quoted are for the session starting in October 2009. Please allow for a slight increase for the academic year 2010/11.

Arts-based Programme

Tuition Fee	Semester	Year
	£4,500	£9,000

Science-based Programme

Tuition Fee	Semester	Year
	£5,513	£11,025

We suggest you allow £650 per month for living expenses, excluding your airfares, based on a single student living in standard University self-catered accommodation. These costs are an estimate and actual costs will vary according to your lifestyle.

Academic Year Dates

Semester 1	September – January
Semester 2	January – June

Planning your Programme

What entry requirements do I need?

You will often need some academic background for the modules you wish to take, although this is not always the case. As a general indication, for American students we would normally require a minimum Grade Point Average of 3.0 where the maximum GPA is 4.0.

What subjects can I take?

All the subjects offered by the University of Exeter (excluding modules taught at Peninsula College of Medicine and Dentistry) at undergraduate level are open to you, provided of course that you meet any academic criteria or prerequisites that may be set. Remember however that not all modules will run in any given year.

How does Exeter's modular structure work?

Our undergraduate degree programmes generally last for three years and consist of modules which are credit-rated to reflect the workload that they represent. A full-time undergraduate is expected to take 120 credits a year. The University's academic teaching is based on two

semesters. Some modules will be taught over both semesters, with final assessment, usually in the form of examinations, held at some point in the final weeks of the second semester. Other modules may be condensed into one semester, with examinations either in early January or at the end of the academic year. If you plan to come for one year you should spread your module choice evenly over the two semesters to avoid the possibility of overload at any particular point in the year.

To help you plan your programme we have given an indication of how Exeter's credit system translates into US semester credits. There is no direct correlation between Exeter credits allocated to a module and the number of formal contact hours required for its study. The credit rating indicates the total expected workload, including independent study involving library research, additional background reading, preparation of seminar papers, essays or project work, as well as lectures, seminars and tutorials. If you are in any doubt as to how your Exeter credits translate into credits at your home institution you should consult with your Study Abroad Adviser.

Exeter credits	US credits
120	30-32
60	15-16
30	7.5
15	3.75



Modules

To find out about our modules and to gain up-to-date and extensive information you must consult the Schools' module lists on their websites – the relevant URLs are given in each subject entry.

Please note that, in common with most British universities, we cannot guarantee the availability of courses in advance as some modules are subject to demand and staffing levels.

On the Schools' websites, for each module you will find a full module description which includes, for example, details of the subject content, any prerequisites, total study time, teaching/learning methods and how the module is assessed. You will also see details such as the credit value and duration of the module.

Module descriptions

Code – SOC 2005

Credit - 30 credits

Semester - Semester 1 and/or Semester 2

- The first digit of the code indicates the level at which the subject is taught, eg, SOC2005 would normally be taken by a second-year undergraduate at Exeter.
- The credit value indicates the expected workload, eg, 30 credits is 25% of the full-year's workload of 120 credits at the University of Exeter.
- The duration indicates in which semester(s) the module is taught.

Building your programme

The modules offered to Study Abroad students provide a flexible approach to designing your academic programme of study at Exeter. Apart from scheduling and prerequisites, your choice can be as wide as you like – ideal for combining modules from different subject areas.

Independent study

It is often possible for you to undertake supervised independent study for credit. Independent Study modules are available in most subject areas and, depending on the length of the study, the module would carry between 10 and 30 credits. This is an ideal way to spread your workload over the year. If you are interested in Independent Study as part of your academic programme, please contact the International Office to discuss the possibilities.

Teaching and assessment

You will be taught in exactly the same way as Exeter's full-time undergraduate students. Formal lectures will play a part, as will small-group teaching in the form of tutorials and seminars, field trips, workshops, projects and laboratory work, depending on the subject you study. The form of assessment will also depend on which modules you take and may include examinations, take-away papers, course work, essays, presentations or project work.

Transcripts

As soon as your credits and marks have been confirmed, the International Office will prepare a transcript showing the number of Exeter credits taken and the overall mark achieved for each module.



What happens if I leave before a module finishes?

If your home institution's academic year does not fit with Exeter's and you therefore need to leave at the start of the Christmas vacation during Semester 1, arrangements can be made for some form of alternative assessment to take place so that you can gain the full semester credit. Your home institution, however, may prefer to award credit pro-rata for the actual time spent at Exeter; check with your adviser first. You should also indicate your intention to leave early at the time of application. This will not affect the outcome of your application but will help us to prepare better for your academic requirements. Study Abroad students are expected to complete Semester 2 and alternative assessment cannot be arranged for this period. Students will be expected to stay and sit exams at Exeter.



Subjects

E Programmes based in Exeter

C Programmes based in Cornwall

ACCOUNTING AND FINANCE **E**

- choose options to match your interests and career requirements
- programme of employability events
- strong links with professional firms and institutes
- international reputation for high quality teaching and research
- a wide range of specialisms covering accounting and finance, economics, econometrics, and management

www.exeter.ac.uk/business-school

ARAB AND ISLAMIC STUDIES **E**

- no previous knowledge of Arabic required
- the only institution in the UK offering Arabic, Persian and Kurdish
- modules cover history, politics, economics, Islamic studies, language, literature and social anthropology
- modules relate directly to our research interests so you will be taught by experts and be brought up to date with contemporary issues
- excellent library collection on the Middle East with around 30,000 holdings plus the Arab World Documentation Unit

www.exeter.ac.uk/iaais

ARCHAEOLOGY **E**

- substantial practical and field work experience in a region with a wealth of internationally important sites and landscapes
- ideally located to use the resources of the region in teaching and research
- research links and field projects in the UK, Europe, Egypt, Kazakhstan, Pakistan, Tropical and Andean South America, Sri Lanka and the USA
- exciting interdisciplinary approach working with researchers in Ancient History, Biosciences, Geography, History and Earth Resources

www.exeter.ac.uk/archaeology

BIOSCIENCES **E C**

- range of broad-based or more specialist biological modules
- taught by leading experts in the fields of conservation biology, ecology, evolutionary biology, genetics, cell biology, microbiology, plant biology, bioinformatics, ecotoxicology, developmental biology, molecular biology, biochemistry, genomics, chemical biology, zoology
- study in Exeter or Cornwall
- state-of-the-art learning facilities
- carry out challenging independent research

Please note that for modules based at the Cornwall Campus, it will not be possible to combine study of these with modules in Exeter.

www.exeter.ac.uk/biosciences

www.exeter.ac.uk/cornwall/biosciences

BUSINESS, MANAGEMENT AND LEADERSHIP **E**

- choose options to match your interests and career requirements
- programme of employability events
- strong links with professional firms and institutes
- international reputation for high quality teaching and research
- a wide range of specialisms covering leadership, marketing and tourism

www.exeter.ac.uk/business-school

CLASSICS AND ANCIENT HISTORY **E**

- study the ancient world in the context of contemporary culture
- study the language, literature and society of the Greco-Roman world
- explore two cultures, which though remote from us in time, are one of the main formative influences on Western civilisation
- great chronological, geographical and methodological variety in academic expertise
- innovative approaches to teaching and the ancient world

www.exeter.ac.uk/classics

CREATIVE MEDIA AND INFORMATION TECHNOLOGY **E**

- opportunity to develop either a broad range of IT knowledge or specialise in particular topics
- no knowledge of mathematics or experience of computer programming required
- staff have research interests in the humanities and can relate directly to students with non-science backgrounds
- lectures and seminars cover a wide range of topics not necessarily directly related to computing
- topics covered may include the imagery of television adverts, the implications of government surveillance, science fiction and the internet

www.exeter.ac.uk/cmit

COMPUTING AND INFORMATION TECHNOLOGY **E**

- study the latest developments in information engineering, pattern recognition, artificial intelligence and emerging technologies
- £2.8 million invested in new academic and social facilities
- interdisciplinary programmes cover the full range of skills within computer science
- develop your problem-solving skills, technical competence and ability to analyse and reflect on a wide range of issues related to computer technology

www.exeter.ac.uk/computing

DRAMA **E**

- £3.7 million recent investment in superb industry-standard Drama facilities
- collaborative and practice-based approach including drama in the community
- opportunities to specialise in areas such as playwriting, performance, music theatre, actor training and technical theatre crafts

- teaching is informed by the research expertise and enthusiasms of both permanent members of staff and many visiting specialists
 - develop your understanding of performance skills alongside a critical and imaginative engagement with the social, historical and cultural contexts of theatre
- www.exeter.ac.uk/drama

ECONOMICS E

- electives to match your interests and career requirements
 - programme of employability events
 - strong links with professional firms and institutes
 - international reputation for high quality teaching and research
 - a wide range of specialisms covering accounting and finance, economics, econometrics, and business
- www.exeter.ac.uk/business-school

ENGINEERING E

- industrially driven engineering design projects linked to academic research
 - modules in Civil Engineering, Electronic Engineering, Materials Engineering, Mechanical Engineering, and Engineering and Management
 - comprehensive laboratories, computing facilities and workshops
 - internationally leading research groups in areas such as advanced materials, water systems and data storage, working with engineering companies based in the UK, EU and world-wide
- www.exeter.ac.uk/engineering

ENGLISH E C

- opportunity to participate in events involving internationally acclaimed authors, actors and directors
- study in Exeter or Cornwall
- research group interests in Medieval, Renaissance, eighteenth-century, Victorian, twentieth- and twenty-first-century literature
- modules cover major authors and topics in English literature and culture from medieval times to the

present day, as well as British and American film

- options in film and creative writing

Please note that for modules based at the Cornwall Campus, it will not be possible to combine study of these with modules in Exeter.

www.exeter.ac.uk/english
www.exeter.ac.uk/cornwall/english

ENGLISH AS A FOREIGN LANGUAGE E

The INTO University of Exeter Centre offers a range of English language modules, currently at intermediate and advanced levels. For advanced level modules, students should have a level of English equivalent to 6.5 on the IELTS scale. For intermediate level modules, students should have a level of English equivalent to 4-5 on the IELTS scale. Further details can be found on page 17.

Please note that that the term dates for INTO University of Exeter modules differ slightly from those for other University modules.

www.into.uk.com/exeter

ENVIRONMENT AND SUSTAINABILITY C

- innovative and exciting new modules
- combine the study of both the scientific and human aspects of key contemporary issues
- opportunity to focus interest while retaining interdisciplinary perspective
- highly relevant to employers and society
- associated with new world-class Environment and Sustainability Institute
- field work opportunities in one of the most beautiful parts of Britain
- based at our £100 million Cornwall Campus near Falmouth

Please note that for modules based at the Cornwall Campus, it will not be possible to combine study of these with modules in Exeter.

www.exeter.ac.uk/esi

FILM STUDIES E

- combine the academic study of cinema with practical filmmaking
 - programme covers American, European, East Asian and other World cinemas
 - learn about the theoretical perspectives and critical debates relating to film
 - University collections offer unique and extensive resources in film and visual culture
 - £3 million investment in facilities, including upgraded projection and viewing equipment
- www.exeter.ac.uk/film

GEOGRAPHY E C

- Human and Physical Geography modules
- excellent technical facilities including a £3.7 million sediment research centre in Exeter
- choice of field courses in UK and abroad
- research interests cover hydrology, geomorphology and earth surface processes, Quaternary environmental and climatic change, historical geography, rural geography, nature-culture relations, cultural and political geography
- research projects in the UK and Europe, Antarctica and Australasia, North and South America, Iceland, the Middle and Far East, the former Soviet Union and southern Africa

Please note that for modules based at the Cornwall Campus, it will not be possible to combine study of these with modules in Exeter.

www.exeter.ac.uk/geography
www.exeter.ac.uk/cornwall/geography

GEOLOGY

- world-renowned experts in mining, minerals engineering and applied geology
- excellent employment prospects
- mixture of pure and applied earth science and engineering modules
- specialist facilities including a test mine and world-class analytical laboratories
- emphasis on field-based training
- based at the University's £100 million Cornwall Campus near Falmouth
- programmes accredited by The Geological Society

Please note that for modules based at the Cornwall Campus, it will not be possible to combine study of these with modules in Exeter.

www.exeter.ac.uk/csm

HISTORY

- wide breadth of academic expertise across diverse historical periods and geographical regions
- choose from a flexible range of history and related modules
- study in Exeter or Cornwall
- expertise ranges from pre-history through to the twenty-first century, incorporating international, economic, cultural and social history
- particular strengths in political, social, local, maritime and medical history
- in Cornwall we reflect environmental and ecological approaches to history

Please note that for modules based at the Cornwall Campus, it will not be possible to combine study of these with modules in Exeter.

www.exeter.ac.uk/history

www.exeter.ac.uk/cornwall/history

LAW

- established reputation in the teaching of English Law and one of the first university Law Schools to teach EU Law
- an established Centre for European Legal Studies (CELS)
- expertise covers human rights, business law, legal history, the law of

- evidence, medical law and ethics, commercial law, multilingual law production, and legal ethics
- programme of employability events
- dedicated Law resources and Moot Room
- study in Exeter or Cornwall

Please note that for modules based at the Cornwall Campus, it will not be possible to combine study of these with modules in Exeter.

www.exeter.ac.uk/law

www.exeter.ac.uk/cornwall/law

MATHEMATICAL SCIENCES

- £2.8 million invested in new academic and social facilities
- international recognition in topics across the Mathematical Sciences
- research expertise in algebra, geometry, number theory, geophysical and astrophysical fluid dynamics, dynamical systems and control, climate modelling, mathematical biology, laser dynamics and in statistics and optimisation

www.exeter.ac.uk/maths

MINING ENGINEERING

- taught by Camborne School of Mines (CSM), which has been training mining engineers for over a century
- exceptional employment prospects
- research interests include blast analysis, advanced surface and underground surveying, health and safety, ventilation networks, rock mechanics and mineral processing
- accredited by the Institute of Materials, Minerals and Mining (IOM3)
- superb facilities including underground test mine
- based at the University's £100 million Cornwall Campus near Falmouth

Please note that for modules based at the Cornwall Campus, it will not be possible to combine study of these with modules in Exeter.

www.exeter.ac.uk/cornwall/csm

MODERN CELTIC AND CORNISH STUDIES

- a rare opportunity to study Modern Celtic Studies or Cornish Studies
- introduces you to the culture, history and politics of the Celtic region
- taught by the Institute of Cornish Studies at our Cornwall Campus
- includes study of the contemporary Celtic regions and nations of Europe
- close links with excellent local resources
- research projects include the Cornish Audio Visual Archive (CAVA) which documents the oral and visual culture of Cornwall

Please note that for modules based at the Cornwall Campus, it will not be possible to combine study of these with modules in Exeter.

www.exeter.ac.uk/cornwall/ics

MODERN LANGUAGES

- opportunity to study French, German, Italian, Russian or Spanish
- £3 million investment in academic facilities with the latest language lab equipment
- friendly and vibrant teaching and learning environment
- programmes cover language, literature, history, cinema, and many other aspects of the life and culture of the countries studied
- linguistics options in French, Italian and Spanish
- specialist translation options in French, German and Spanish

www.exeter.ac.uk/languages

FOREIGN LANGUAGE CENTRE

- credit-rated language modules for all students from beginners to advanced level
- Arabic, French, German, Italian, Japanese, Mandarin Chinese and Spanish
- modules develop the full range of communication, listening and written skills
- multimedia language laboratories
- large self-study resource area with networked multimedia PCs and facilities for viewing digital media and online satellite TV

www.exeter.ac.uk/flc

PHILOSOPHY**E**

- home to the UK Research Council (ESRC) funded national centre for study of the impact of the genome on society
 - international reputation in philosophy of natural and social sciences and social, political, and moral philosophy
 - one of the world's leading departments for philosophy of biology
 - a wide range of student choice
- www.exeter.ac.uk/philosophy

PHYSICS**E**

- wide range of modules including astrophysics and biomedical physics
- options range from cosmology and biophysics to quantum devices
- a leading international research institution in both theoretical and experimental physics
- recent £5.4 million investment in ultra fast lasers, nano-fabrication, bio-imaging and computing facilities
- new £1 million supercomputer that is ranked as the sixth most powerful computer in a UK university*

*Top500 Supercomputer Sites
(www.top500.org)

www.exeter.ac.uk/physics

POLITICS AND INTERNATIONAL RELATIONS**E C**

- one of the best all round politics departments in the UK
- study in Exeter or Cornwall
- research teams working in international relations, Middle East politics, comparative politics, public policy and administration, climate change and sustainability, campaigns and elections and political theory
- explore the political, historical, institutional, social, economic and cultural forces that mediate the exercise of power within and between nations
- emphasis on interdisciplinary analysis: research and teaching benefit from interactions both within and outside traditional approaches

Please note that for modules based at the Cornwall Campus, it will not be possible to combine study of these with modules in Exeter.

www.exeter.ac.uk/politics

www.exeter.ac.uk/cornwall/politics

PSYCHOLOGY**E**

- accredited by the British Psychological Society
 - National Health Service clinical psychologists on the teaching team
 - specialist research laboratories, extensive computer laboratories and state-of-the-art audio/visual facilities
 - research expertise feeds directly into our research-led programmes
 - research covers infant and adult visual perception, economic psychology, consumer psychology, psychopathology, especially mood disorders, cognition, cognitive neuroscience and neuropsychology, social psychology, especially the psychology of individuals and organisations, and animal behaviour
- www.exeter.ac.uk/psychology

RENEWABLE ENERGY**C**

- first undergraduate programme of its kind in the UK
- research strengths in geothermal energy, wave power, energy policy and finance, and transport biofuels
- practical, vocational programme
- strong links with a wide variety of companies
- extensive field work and industrial tours
- superb facilities including renewable energy laboratory and field station
- excellent employment prospects

Please note that for modules based at the Cornwall Campus, it will not be possible to combine study of these with modules in Exeter.

www.exeter.ac.uk/cornwall/csm

SOCIOLOGY**E**

- recognised internationally for expertise in the sociology of science and culture
- UK Research Council (ESRC) funded national centre for study of the impact of the genome on society

- study the structure and meaning of race, ethnicity, class and gender; domestic life and interpersonal intimacy; health and illness; the economy and agencies of the state; religious belief; the production and distribution of scientific knowledge and technological expertise; sport, recreation and ritual
 - interdisciplinary approach provides a wide range of student choice
- www.exeter.ac.uk/sociology

SPORT AND HEALTH SCIENCES**E**

- state-of-the-art teaching and research facilities including labs for biomechanics, physiology, psychology and sociology
 - broad-based or specialist modules
 - one of the UK's top sporting universities, consistently in top 10 in BUCS championships
 - learn through lectures, tutor-led workshops/seminars and laboratory sessions
 - based at the St Luke's Campus in Exeter
- www.exeter.ac.uk/sshs

THEOLOGY**E**

- varied programme including applied theology, philosophy of religion, science and religion, ethics, biblical studies, Christian doctrine and history
- flexibility to customise your degree around your own interests
- wide range of teaching and learning methods including lectures, seminars, group-work, field trips, debates, portfolios, presentations, journalling, and one-to-one or small group tutorials
- options include religion and public life, science and religion, history of religions, biblical studies, ethics, philosophy, or Christian history and doctrine

www.exeter.ac.uk/theology

Key contacts

University Address

University of Exeter, Laver Building,
North Park Road, Exeter, UK
UK EX4 4QE

Information on the Study Abroad
programme and application forms:

Isabela Coelho-Knapp

Study Abroad Administrator

Phone: +44 (0) 1392 725739

Email: studyabroad@exeter.ac.uk

Fax: +44 (0) 1392 263856

Study Abroad policy:

Anne Worth

Study Abroad Officer

Phone: +44 (0) 1392 269002

Email: studyabroad@exeter.ac.uk

Fax: +44 (0) 1392 263856

To order a copy of the University's
Undergraduate Prospectus please use
our online form at

www.exeter.ac.uk/prospectus

Alternative formats

This catalogue is available in
alternative formats, such as large print,
Braille or audio type, on request.

Please contact the Disability Resource
Centre

Email: disability@exeter.ac.uk

Phone: +44 (0) 1392 263880

Disclaimer

The information given in this Brochure is as far
as possible accurate at the date of publication.
However, the University also reserves the right
at any time (whether before or after the
student's first term of study for any particular
programme) to withdraw or amend the
contents of any subjects forming part of any
programme. Admission to the University for any
particular programme is granted to the student
on the understanding that the programme is
liable to be changed by such withdrawal,
amendment or substitution.

www.exeter.ac.uk/studyabroad

Acknowledgements

Photography

We acknowledge with thanks Tim Pesteridge,
Steve Tanner, Kate Bailey and individual students
and staff.

Produced by

Marketing Office, University of Exeter

Designed by

Design and Publications Office, University of
Exeter

Printed by: Brightsea Press

Published May 2009

© University of Exeter



www.exeter.ac.uk

100% recycled

This prospectus is printed on Revive 100 uncoated 100% recycled
post consumer waste paper.



recycle

Please recycle this prospectus when you have finished with it.